



**M**

**MOTT  
MACDONALD**

**M**



**GEORGE LESLIE LTD**  
CIVIL ENGINEERING CONTRACTORS  
[www.georgeleslie.co.uk](http://www.georgeleslie.co.uk)

# Tiree Ferry Terminal Old Pierhead and Main Approach Repairs

Public Engagement 15<sup>th</sup> May 2019  
2.00pm to 4.00pm



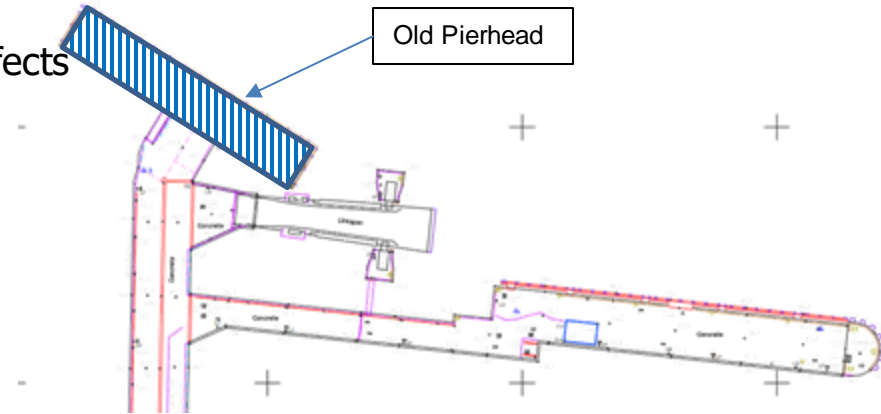
M  
MOTT  
MACDONALD



GEORGE LESLIE LTD  
CIVIL ENGINEERING CONTRACTORS  
[www.georgeleslie.co.uk](http://www.georgeleslie.co.uk)

# Tiree Ferry Terminal Old Pierhead and Main Approach Repairs

- Tiree Old Pierhead is currently closed to vessels and loading is not permitted on the deck
- The capacity of the structure was unknown and defects include:
  - Timber fender system in very poor condition
  - Corrosion of steel support piles
  - Damaged ladders and bollards
  - Spalling to underside of concrete deck
- CMAL have appointed:
  - Mott MacDonald to design the repairs and supervise construction .
  - George Leslie Ltd to construct the Works.



# Tiree Ferry Terminal Old Pierhead and Main Approach Repairs

- Additional defects to be addressed:
  - Cracking of the Main Approach



- Corrosion of the steel Pedestrian Walkway





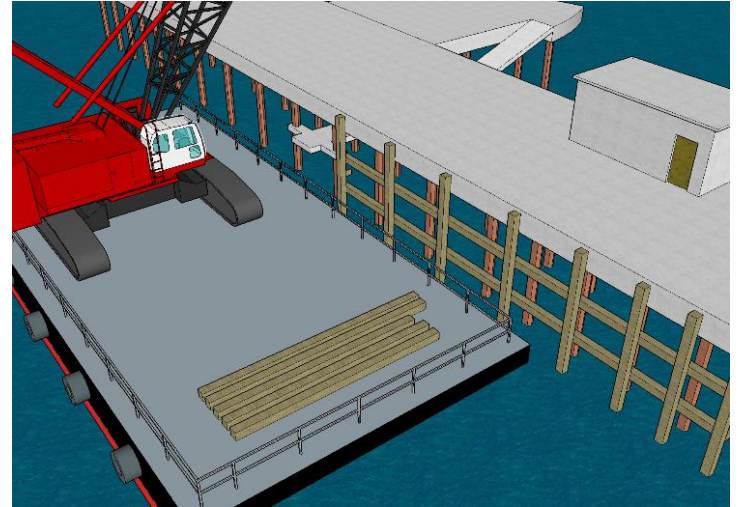
M  
MOTT  
MACDONALD



GEORGE LESLIE LTD  
CIVIL ENGINEERING CONTRACTORS  
[www.georgeleslie.co.uk](http://www.georgeleslie.co.uk)

# Tiree Ferry Terminal Old Pierhead and Main Approach Repairs

- Old Pierhead repairs to include:
  - Installation of a new fendering system
  - Repairs to piles, installation of Cathodic Protection
  - New ladders and bollard layout
  - Repairs to cattle ramp
  - Removal of existing building on Old Pierhead deck
- Main Approach repairs to include:
  - Concrete repairs to prevent movement currently causing cracking
  - Infilling of voids beneath masonry structure
  - Removal of existing berthing structure to West
- Pedestrian Walkway repairs to include:
  - Replacement of deck plates
  - Cleaning and painting of steel supports





M  
MOTT  
MACDONALD



GEORGE LESLIE LTD  
CIVIL ENGINEERING CONTRACTORS  
[www.georgeleslie.co.uk](http://www.georgeleslie.co.uk)

# Tiree Ferry Terminal Old Pierhead and Main Approach Repairs

- Repairs to the Old Pierhead will allow
  - Berthing/mooring of vessels up to 250t displacement
  - 10kN/m<sup>2</sup> loading to deck (Standard Highway loading, equivalent to 1.0t per m<sup>2</sup>)
- Repairs to the Old Pierhead will
  - support the Linkspan Replacement Project by allowing the new linkspan deck to be stored over winter on the pierhead prior to installation,
  - and open up the structure to be used by others following the installation of the linkspan (Spring 2020)
- Works due to start on site June 2019.
- Works currently programmed to complete Winter 2019.
- Construction works will not disrupt the ferry service.



M  
MOTT  
MACDONALD



GEORGE LESLIE LTD  
CIVIL ENGINEERING CONTRACTORS  
[www.georgeleslie.co.uk](http://www.georgeleslie.co.uk)

# Old Pierhead and Main Approach Repairs— Future Public Engagement

- George Leslie will appoint a Public Liaison Officer to engage with the Tiree community
- Contact details for the Public Liaison Officer will be provided in near future
- Further engagement activities will be planned in due course as required

Prior to commencement of the works:

- Temporary signage placed adjacent to the works with contact details
- Public information leaflets will be distributed with further information on the works
- A fortnightly newsletter will be distributed in advance of, during, and post completion of the works to inform of progress on the works
- The Public Liaison Officer will visit local properties / businesses to discuss any likely noise and light disturbance resulting from the works



M  
MOTT  
MACDONALD



GEORGE LESLIE LTD  
CIVIL ENGINEERING CONTRACTORS  
[www.georgeleslie.co.uk](http://www.georgeleslie.co.uk)

# Tiree Linkspan Refurbishment

CMAL have appointed:

- Mott MacDonal to design the works and supervise construction.
- George Leslie Ltd to construct the Works.

Progress;

- Fabrication of new decks will begin shortly,
- Enabling works such as; pile painting, lifting beam painting are to be undertaken July/August 2019.
- CFL are currently finalising requirements for interim Lo-Lo freight service to supplement a passenger only service using MV Clansman.
- Further Public Meeting September 2019